

# **PGSuper Tutorials**

**From PGSuper.com**

## **Using PGSuper.com Custom DOT Configurations**

**BridgeSight**

**Software<sup>™</sup>**

BridgeSight Inc.  
P.O. Box 19172  
1848 Venice Drive  
South Lake Tahoe, CA 96151  
877-0441-0346  
[www.BridgeSight.com](http://www.BridgeSight.com)

<b>Title</b>	PGSuper Tutorial – Using PGSuper.com Custom DOT Configurations	<b>Publication No.</b>	BS050032010-3
<b>Abstract</b> This document provides set up instructions for using PGSuper.com Custom DOT Configurations.			
<b>Notes</b>			
<b>Author</b>	Staff – BridgeSight Software	<b>Sponsor</b>	BridgeSight Inc P.O. Box 19172 South Lake Tahoe, CA 96151
<b>Specification</b>	AASHTO LRFD Bridge Design Specifications PGSuper Version 2.3		
<b>Original Publication Date</b>	06/20/2010	<b>Date of Latest Revision</b>	<b>Version</b> 1.0
<b>Notice of Copyright</b>	Copyright © 2010 BridgeSight Inc. All Rights Reserved. No part of this publication may be reproduced, stored in a retrieval system, or transmitted in any form or by any means (electronic, mechanical, photocopied, recorded, or otherwise), without prior written permission from BridgeSight Inc.		

## **Disclaimer**

This BridgeSight PGSuper Tutorial is provided complements of BridgeSight Inc.. BridgeSight Inc. asserts a copyright in this work. BridgeSight Inc. retains the exclusive ownership of this copy of the PGSuper Tutorial.

This document is provided AS IS without any warranty, express or implied by anyone using, distributing, copying or otherwise possessing this document. The entire risk as to the use, results and performance of this document is assumed by you. BridgeSight Inc. does not warrant, guarantee, or make any representations regarding the use of, merchantability or fitness for a particular use of the product. Should this document prove defective, you assume the entire cost of all necessary servicing, repair or correction. Further, BridgeSight Inc. does not warrant, guarantee, or make any representations regarding the use of, or the results of the use of this document in terms of correctness, accuracy, reliability, currentness, or otherwise and has no obligation to correct errors, make changes, support or distribute updates; and you rely on this document solely at your own risk. BridgeSight Inc. will not be liable for any damages, service, repair, correction, loss of profit, lost savings, or any other incidental, consequential, or special damages of any nature whatsoever resulting from the use or inability to use this product including any claims, suits or causes of action involving claims of infringement of copyrights, patents, trademarks, trade secrets, or unfair competition. The Licensee indemnifies and holds harmless BridgeSight Inc., its officials, employees, and contributors for any injury to the person or property of third parties arising out of the use of or any defect in this document. BridgeSight Software retains all rights not expressly granted. Nothing in this agreement constitutes a waiver of BridgeSight Inc.'s rights under United States copyright laws or any other Federal or State law.

## Introduction

PGSuper's powerful library and template system enables custom configurations for virtually any transportation agency or precast producer. Predefined configurations put your girder sections, standards, and design policies just a few mouse clicks away. Once created, configurations can be shared within a local office or with the world via the Internet.

PGSuper.com hosts a community repository of custom configurations for various departments of transportations (DOT's). This tutorial describes how to set up PGSuper to access the PGSuper.com server.

## Prerequisites

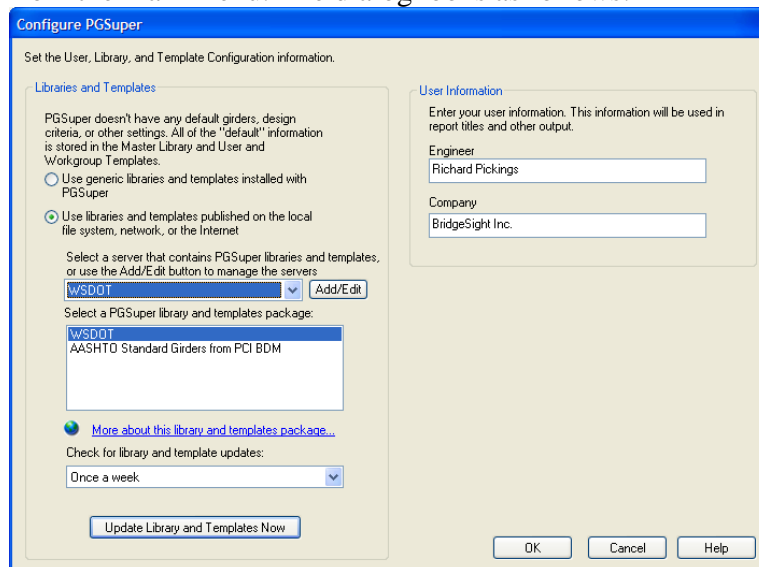
What you need to get started:

1. A PC connected to the Internet.
2. Completed installation of PGSuper Version 2.3 or later.

## PGSuper Set Up

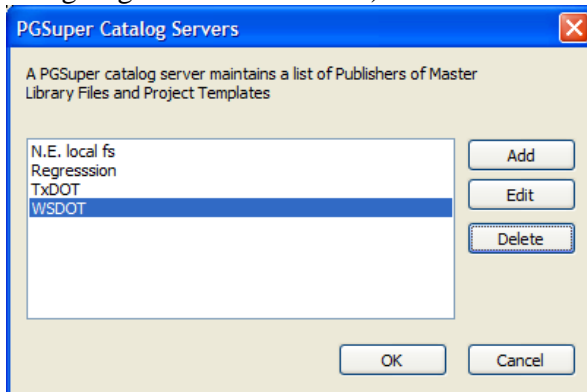
After you have installed PGSuper, connect to PGSuper.com by:

1. Run PGSuper from the Windows Start Menu
2. Open the Configure PGSuper dialog by selecting "File | Configure PGSuper" from the main menu. The dialog looks as follows:

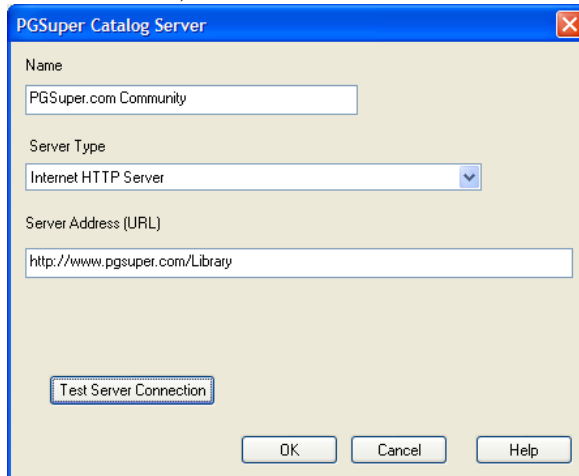


3. Select "Use libraries and templates published on the local file system, network, or Internet" as shown in the figure above.

- Click on the “Add/Edit” button to bring up the dialog below (Note that your dialog might list other servers).



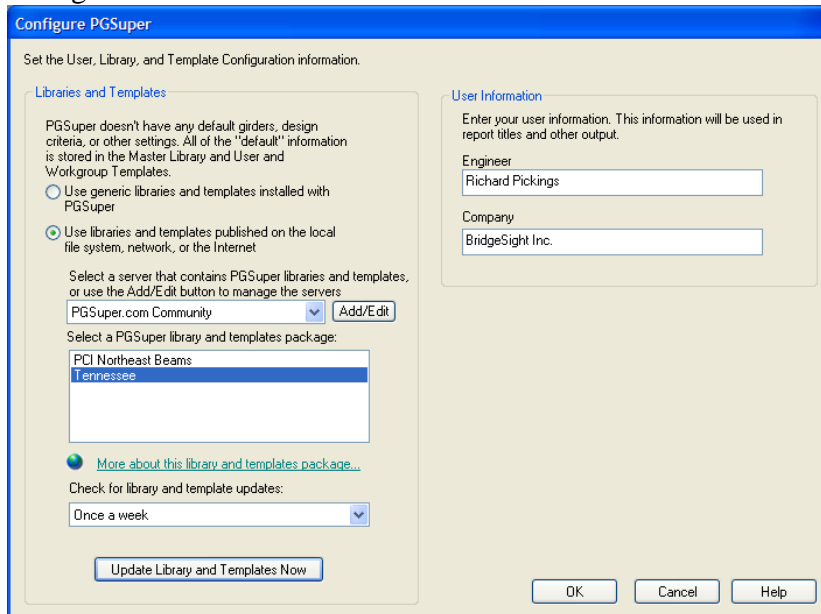
- Click “Add” to bring up the server configuration dialog and fill it in as shown below. Make sure you type in the server name exactly as shown below (names are case-sensitive).



Server Name: **PGSuper.com Community** (or your choice)  
Server Type: **Internet HTTP Server**  
Server Address: **http://www.pgsuper.com/Library**

- Click “Test Server Connection”. If all is well, you will get a message stating that you have connected to the server successfully. If this is not the case, refer to the Troubleshooting section of this document.
- Click OK to return to the Catalog Servers dialog, and then click OK again to return to the PGSuper Configuration dialog.

- Select the “PGSuper.com Community” site as shown below. A list of available configurations will be shown.



- Select the desired DOT configuration from the list and click “Update Library and Templates Now”.
- You may now use the “File New” dialog to create new PGSuper project files based on the DOT’s templates.
- Edit project data, design your girders, and always make sure to check your calculations!

## Tip

All PGSuper.com configurations have an associated web site that contains detailed information. To quickly visit the web site, open the Configure PGSuper dialog, select the desired configuration, and click on the hyperlink control that looks like:



## Troubleshooting

Connecting to the PGSuper.com configuration library should be simple. But, since computers are involved, problems can occur. Here are some common culprits:

- Your computer is not connected to the Internet.** Open your web browser and surf to <http://www.pgsuper.com/> . If this works, you have Internet access to our site.

- **Double check to make sure you specified the correct server address**  
Computers leave no room for mistakes
- **Firewall software is blocking the PGSuper.exe program from accessing the Internet** This one can be tricky. If you have administrative rights to your firewall program, make a setting to allow PGSuper.exe both HTTP and FTP access for ingoing and outgoing traffic. If you do not have admin rights, then ask your system administrator to open the firewall for PGSuper.exe.
- **Error Downloading ....** This error occurs if the Internet connection fails during file transfer. Try selecting the configuration and clicking “Update Library and Templates Now” again. Contact the administrator at PGSuper.com if the error persists.

## Customized Configurations for Your DOT

BridgeSight has been active in PGSuper’s development since its inception. We can develop and host custom PGSuper configurations for your agency, and we can provide training and support if you want to develop your own. We can also enhance PGSuper with virtually any engineering feature you would like. For details, contact us at

BridgeSight Inc  
P.O. Box 19172  
South Lake Tahoe, CA 96151  
877-441-0346  
mkting@bridgesight.com

## Additional Information

Additional information on using PGSuper is available in the PGSuper User’s Guide (press F1 from within PGSuper). Also, interactive training videos can be viewed at [PGSuper.com](http://PGSuper.com).